

City of South Lyon

Available Commercial Properties & Businesses

Winter 2011/2012



**City of South Lyon
335 S. Warren
South Lyon, MI 48178
(248) 437-1735**

www.southlyonmi.org

Last Updated: January 19, 2012

This is a list of commercial properties available for sale or lease in the South Lyon area. For further information, assistance with a particular project or if you would like to have your property included in this list, please contact Kristen Delaney at (248) 437-1735 or kdelaney@southlyonmi.org.

This list is intended for economic development purposes, and is as accurate as possible, given the information available. Buyers and their agent should confirm all information regarding square footage, prices, etc. For further information on allowable uses at the properties listed below, please consult the City of South Lyon Zoning Map and Code of Ordinances.

Retail & Service

25900 Pontiac Trail

Address: 25900 Pontiac Trail
(Gateway Commons Shopping Center),
South Lyon, MI 48178

Lease/Sale: Lease

Square Footage: 1,600 – 2,200 SF approximately

Use: Commercial

Price: \$18/SF

Contact: Mark Szerlag, CCIM (248) 476-1500 or Eric Szerlag (248) 476-3700 Thomas A. Duke Company

Additional Information: This property is the former location of Carvel Ice Cream.



558 N. Lafayette

Address: 558 N. Lafayette, South Lyon, MI 48178

Lease/Sale: Lease

Square Footage: 1,000+ SF

Use: Commercial

Price: N/A

Contact: Commercial Real Estate Services, Craig or Leo Gonzalez (734) 416-1500

Additional Information: This property is the former location of My Supper Shop.



588 N. Lafayette

Address: 588 N. Lafayette, South Lyon, MI 48178

Lease/Sale: Lease

Square Footage: 1,500+ SF

Use: Commercial

Price: N/A

Contact: Commercial Real Estate Services, Craig or Leo Gonzalez (734) 416-1500

Additional Information: This property is the former location of Four Seasons Gallery of Crafts.



320 N. Lafayette

Address: 320 N. Lafayette, South Lyon, MI 48178

Terms: For Sale by Owner

Square Footage: Approximately 1,800 SF

Use: Retail/Service/Office

Price: \$100,000

Contact: Steve Rodriguez (734) 751-5106

Additional Information: This property is the former location of the Knitting Den.

[Located in the Downtown Development Authority.](#)



117 N. Lafayette

Address: 117 N. Lafayette, South Lyon, MI 48178

Terms: Lease or Sale

Square Footage: 5,600 SF building (3,200 SF of retail on the first level and (3) 800 SF apartments/office on second level)

Use: Commercial / Office / Multi-Family

Price: \$169 SF or \$950,000 (sale)

Retail = \$23.00 SF Gross or **Office** = \$15.00 SF Gross (lease)

Contact: Mark Szerlag, CCIM (248) 476-1500 or Eric Szerlag (248) 476-3700 Thomas A. Duke Company

Additional Information: This property is the former location of Teknicolors home store. It faces Pontiac Trail and has excellent visibility.

[Located in the Downtown Development Authority.](#)



125 W. Lake

Address: 125 W. Lake, South Lyon, MI 48178
Terms: Lease or Sale
Square Footage: 2,899 SF building
Use: Commercial / Office / Multi-Family
Price: N/A
Contact: [National Realty Centers](#) (734) 432-2002

Additional Information: Three units with 13 offices total. Has a basement, on-site parking. Shown by appointment only – please do not contact tenants.

[Located in the Downtown Development Authority.](#)



321 Pettibone

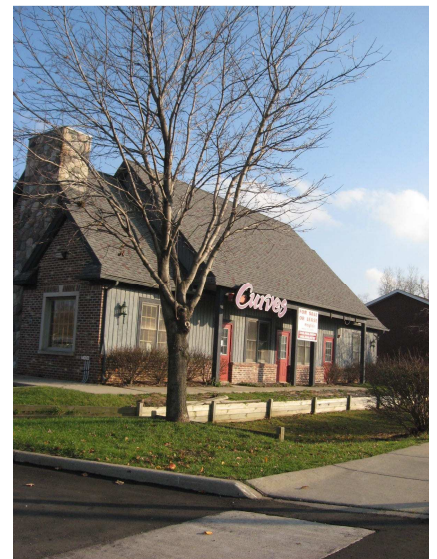
Address: 321 Pettibone, South Lyon, MI 48178
Terms: Lease
Square Footage: Up to 4,000 SF available
Use: Retail/Service/Office
Price: N/A
Contact: Van Esley Real Estate (734) 459-7570



601 S. Lafayette

Address: 601 S. Lafayette, South Lyon, MI 48178
Terms: Lease
Square Footage: N/A
Use: Retail/Service/Office
Price: N/A
Contact: Mayfair Real Estate (248) 486-9227

Additional Information: Join Presidential Autowerks and Curves in this busy strip center.



22908 Pontiac Trail

Address: (King Plaza) 22908 Pontiac Trail, South Lyon, MI 48178

Terms: Lease

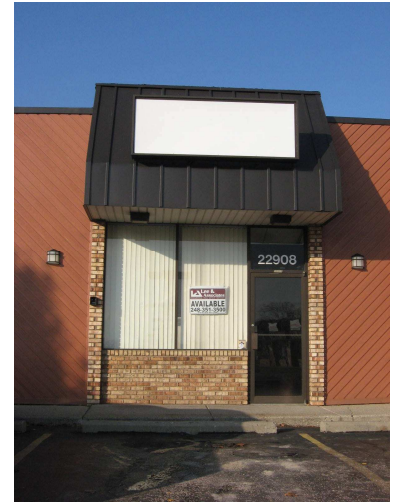
Square Footage: 715 SF

Use: Retail/Service/Office

Price: \$700/month

Contact: John Dinsmore, Lee & Associates of Michigan
(810) 923-9106 or john.dinsmore@lee-associates.com

Additional Information: Busy shopping center location is excellent for retail, office or professional services.



22205 - 22381 Pontiac Trail

Address: (Brookdale Square Shopping Center) 22205-22381 Pontiac Trail, South Lyon, MI 48178

Terms: Lease

Square Footage: Various units available

Use: Retail/Service/Office

Price: N/A

Contact: John Gottesman, GH Real Estate Advisors
(248) 341-3446 x202

Additional Information: Busy shopping center, several units of various sizes available.



21885 Pontiac Trail

Address: (Glenwood Plaza) 21885 Pontiac Trail, South Lyon, MI 48178

Terms: Lease

Square Footage: N/A

Use: Retail/Service/Office

Price: N/A

Contact: David Chopp, DRC Realty of Michigan
(517) 404-6808

Additional Information: Smaller unit located between Dollar Store and Jimmy Johns.



Industrial

No available properties at this time.