



FINE HOMES BY MAX

Peter Maxfield - 248-437-4144

RE/MAX Fine Homes

Isn't your home a fine home?



DSC04524

COMMERCIAL MLS #29160130

For Lease Price: \$650

Status: ACTV

Mailing Address: 327 N LAFAYETTE ST N
SOUTH LYON, MI 48178

Property City: SOUTH LYON
Directions: LAFAYETTE ST IS PONTIAC
TRAIL

Crossroads: W OF LAFAYETTE, N OF 10 MILE
Subdivision: ASSESSOR'S PLAT NO 2 - CITY
OF SOUTH LYON

School District: SOUTH LYON

Ttl Bldg Sq Ft:	1,200	Year Built:	1965
Ft:		Yr	
Acres:	0.00	Remodeled:	
Lot Size:	82X141	Frontage:	82
		Feet:	

Great space in downtown area! 500 sf . Just a few doors from the South Lyon Hotel. Right now it is two units, roughly 500 + 600, with 100 common area with lav. Up to 11 parking spots in private parking area off the street. Tenant shares elec and heat. Water and grounds maint is shared with other office and building in complex. Convenient to everywhere. Building sits back off the street. Access to illuminated monument sign

Building Information

Total Units:	1	Main Bld Sq Ft:	500	Inventory List:	
% Leased:	50	Office Sq Ft:	500	Inventory Incl:	
No Efficiencies:		Source Bldg Sq Ft:		Access To Interstate:	Y 4 Miles
No 1 BR Units:		Rental Cert:	Y	Access To Railroad:	N
No 2 BR Units:		Conforms to Zoning:	Y	Access To Airport:	Y 35 Miles
No 3 BR Units:		Restrictions:	N	Access To Waterway:	Y 60 Miles

Encroachments: N



DSC04525



DSC04526



DSC04527



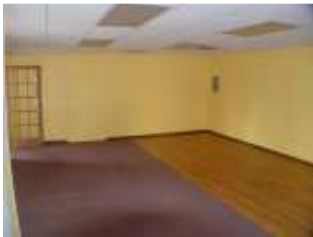
DSC04528



DSC04529



DSC04535



DSC04536



DSC04537



DSC04538



The accuracy of all information, regardless of source, is not guaranteed or warranted.
 All information should be independently verified.
 Copyright Realcomp II Ltd. Shareholders. 2010 Realcomp II Ltd.,
 All Rights Reserved.

